



Triangle TR757

Product Information



Product Description

Application

Triangle TR757 Ice-Studded Segment Tire designed to provide the maximum grip in the most demanding conditions of long lasting permanent sub-zero iced-up roads.

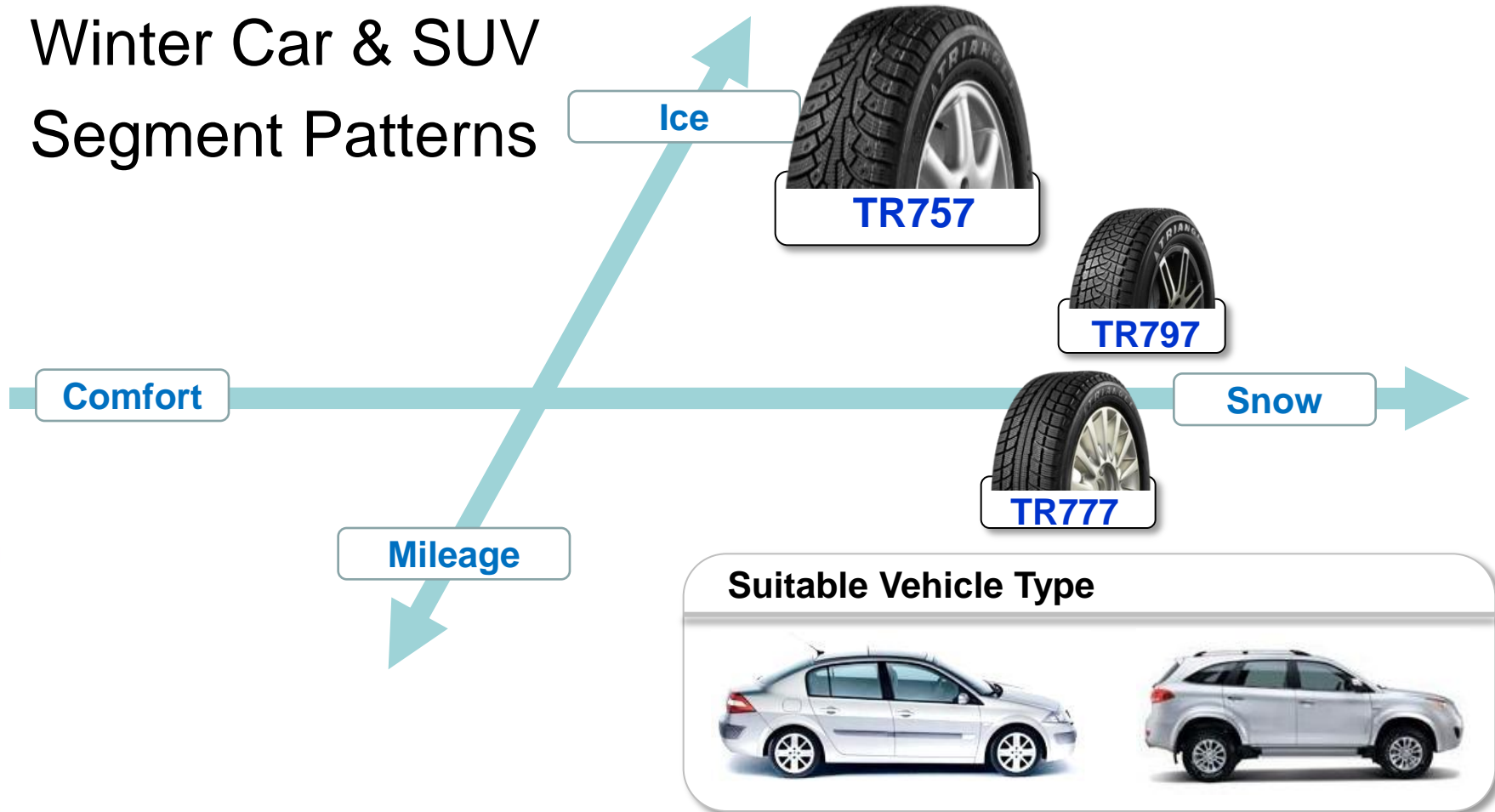
Directional tread design and optimised stud arrangement to improve the grip on icy and compact snowy road. Silica compound designed to perform in sub-zero conditions.

Silica Compound



Product Positioning

Winter Car & SUV
Segment Patterns





Product Features & Benefits.

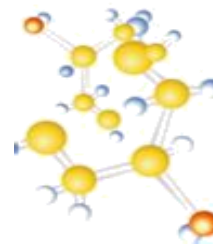
- New Compound

Feature

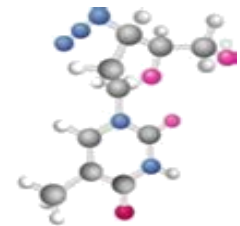
Silica Compound

Benefit

Improved Grip at Sub-zero Conditions



Molecule
High **Dispersion**
to Reinforce the
Intermolecular
Bonding
Strength



Silica Compound

Product Features & Benefits.

- Pattern Design

Feature

Special Stud Hole Design
for Great Stud Retention

Benefit

Improve the Grip On Icy and
Compact Snow Road





Product Features & Benefits.

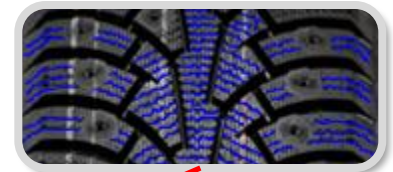
- Pattern Design

Feature

High Radial Blade density
and “Zigzag” Small Groove
Design

Benefit

High Traction On Ice
Surface





Product Features & Benefits.

- Pattern Design

Feature

Straight Center Line Rib
Design to Provide Increased
Center Line Rigidity

Benefit

Provide Good Snow Traction
and Handling



Product Features & Benefits.

- Pattern Design

Feature

Directional Pattern with Large Evacuation Channels

Benefit

Improve Slush & Water Evacuation



Line-up Information.

Pattern	Size	Load Index	Speed Rating
TR757	175/65R14	82/86	Q/S/T
TR757	185/65R14	90	T
TR757	185/65R15	92	T
TR757	195/65R15	91/95	Q/S/T
TR757	205/55R16	91/94	Q/T
TR757	205/60R16	96	T
TR757	215/65R16	102	T
TR757	225/60R17	103	T
TR757	P235/65R17	108	T
TR757	235/60R18	107	T
TR757 ★	225/50R16	96	T
TR757 ★	215/45R17	91	T
TR757 ★	225/45R18	95	T

Size Range Covering Passenger & SUV From 14 – 17 inch.
 The mould of 3 sizes with ★ will be ready in Nov,2014.